

MONTHLY MEMBERSHIP PROGRESS REPORT

District 325 J

Results as of: 12/31/2023

GMT:

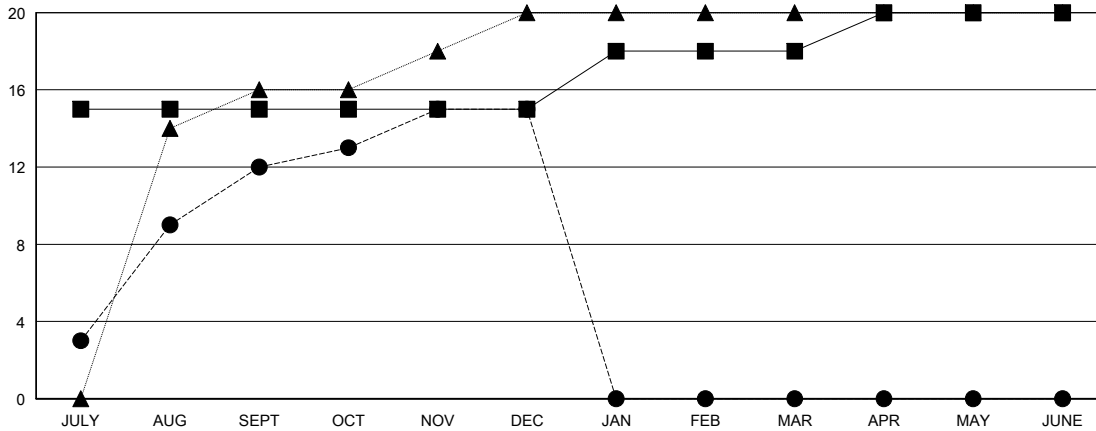
LOCATION NEPAL

GMT CA

Clubs			
RESULTS FOR 2023-2024			
QUARTER	NEW CLUB GOAL	NEW CLUBS	DROPPED CLUBS
JULY/AUG/SEPT	15	12	0
OCT/NOV/DEC	0	3	4
JAN/FEB/MAR	3	0	0
APR/MAY/JUNE	2	0	0

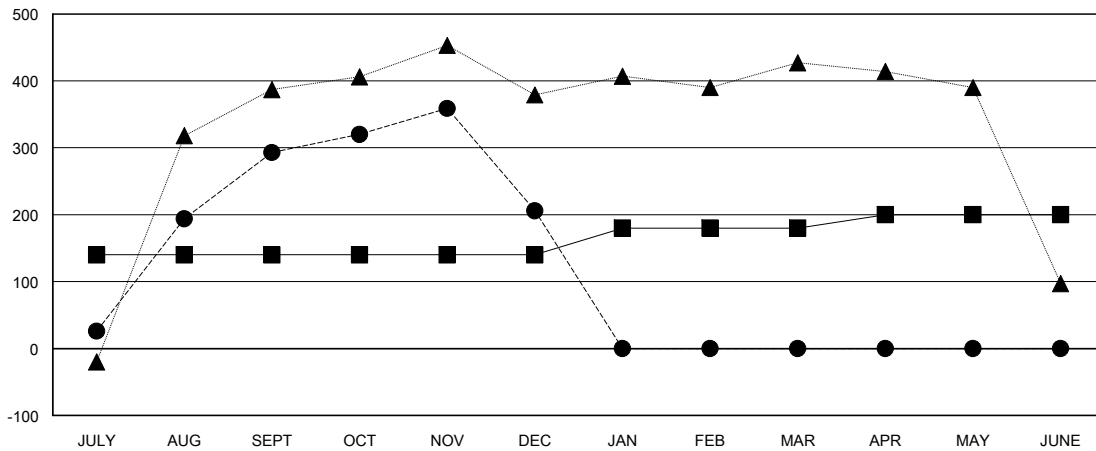
Members			
RESULTS FOR 2023-2024			
QUARTER	MEMBER GROWTH NET GOAL	MEMBER GROWTH ACTUAL	DROPPED MEMBERS ACTUAL (including transfers)
JULY/AUG/SEPT	140	384	91
OCT/NOV/DEC	0	120	205
JAN/FEB/MAR	40	0	0
APR/MAY/JUNE	20	0	0

GOALS AND ACTUAL NEW CLUBS CUMULATIVE



- - CURRENT YEAR GOALS FOR NEW CLUBS
- - CURRENT YEAR ACTUAL NEW CLUBS
- ▲ - LAST YEAR ACTUAL NEW CLUBS

GOALS AND ACTUAL MEMBERS CUMULATIVE



- - MEMBER GROWTH NET GOAL
- - MEMBER GROWTH ACTUAL
- ▲ - LAST YEAR MEMBERSHIP ACTUAL

DROPPED CLUBS: 4	
DROPPED MEMBERS	
DECEASED	0
CLUB CANCELLED	73
OTHER	223
TOTAL	296

58 CLUBS OF 107 ADDED 1 OR MORE NEW MEMBERS

GENDER DISTRIBUTION	
MALE	1,667 (68.63%)
FEMALE	762 (31.37%)

[CLICK HERE FOR CUMULATIVE MEMBERSHIP DATA](#)

TOTAL FAMILY UNIT MEMBERS	1,707
FAMILY MEMBERS PAYING HALF DUES	1,114